



CleanVision Plan

Fourth Public Open House

April 19, 2022

Visit Our Website: dtecleanenergy.com

Email us at anytime: DTE_Electric_CleanVision@dteenergy.com

Meeting logistics

- Today's presentation will be followed by Q&A
- Live closed captioning is available
- The presentation will be followed by details on how to provide comments on the CleanVision Plan
- This presentation is available on the website dtecleanenergy.com
- Questions or comments can be submitted anytime during this event by using the "Q&A" function in the top right-hand side of your screen
 - We will queue up audience questions and comments after the presentation
 - Please include your name in the question/comment
- Additional opportunities for public input are available through the comment section on the website
- The presentations, transcripts and recordings for all public meetings will be posted to dtecleanenergy.com
- If you are having technical difficulty, please contact DTE_Electric_CleanVision@dteenergy.com ([link](#))

You may find recordings, transcripts, and the presentations from the first three CleanVision Plan Open Houses on our website

[DTE Energy - Net Zero Carbon Emissions by 2050 \(dtecleanenergy.com\)](https://dtecleanenergy.com)

DTE Electric CleanVision Plan

DTE Electric's CleanVision Plan is our journey to achieve net-zero carbon emissions for the Electric Company by 2050 while providing clean, reliable, and affordable energy to our customers. In October 2021, DTE Electric announced plans to accelerate our interim goal of 50% carbon emissions reductions, achieving that goal by 2028. We will further outline our goals to provide cleaner, reliable, and affordable energy in our next Integrated Resource Plan (IRP) filing with the Michigan Public Service Commission (MPSC).

The upcoming Open Houses can be added to your calendar here: [March 22, 2022, at 1 p.m. and 6 p.m.](#), and [April 19, 2022, at 1 p.m. and 6 p.m.](#)

FAQ

[SEE ALL FAQS >](#)

What is an integrated resource plan?

An Integrated Resource Plan (IRP) is a comprehensive plan to meet electricity needs of our customers 5, 10, and 15 years into the...

[READ MORE](#)

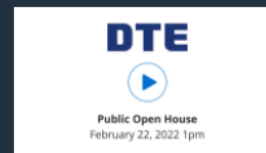
Is there a way for me to engage with DTE in the CleanVision Plan Process?

Yes! Public input is an important part of the IRP process. DTE will be hosting four public open houses in the first half of this year. In or...

[READ MORE](#)

Will you have more open houses? If so, how do I participate in the public open houses and what topics will be covered?

Open Houses



February 22, 2022 at 1pm ET

- [Download Presentation](#)
- [Watch Recording](#)
- [Read Transcript](#)



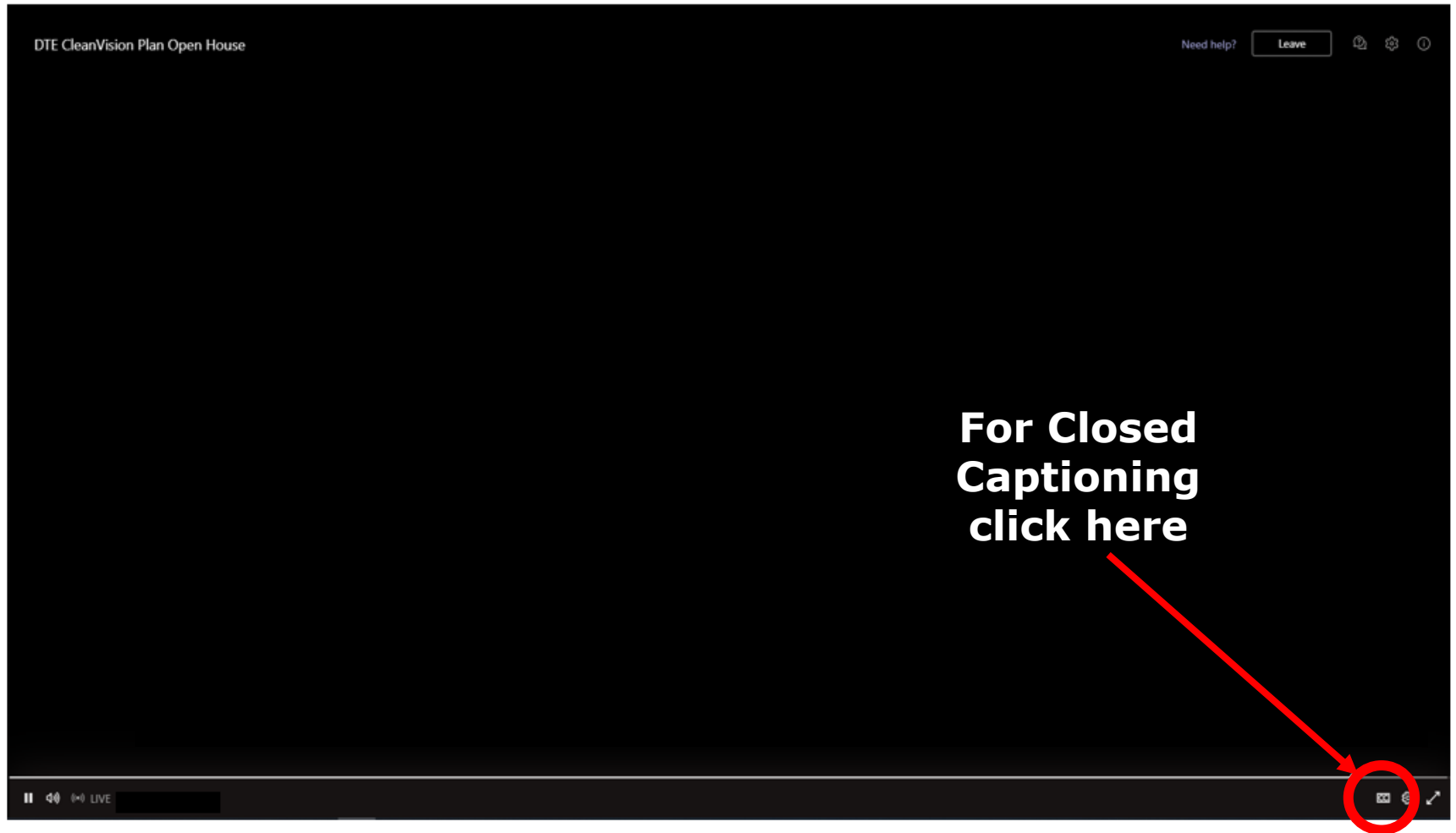
February 22, 2022 at 6pm ET

- [Download Presentation](#)
- [Watch Recording](#)
- [Read Transcript](#)

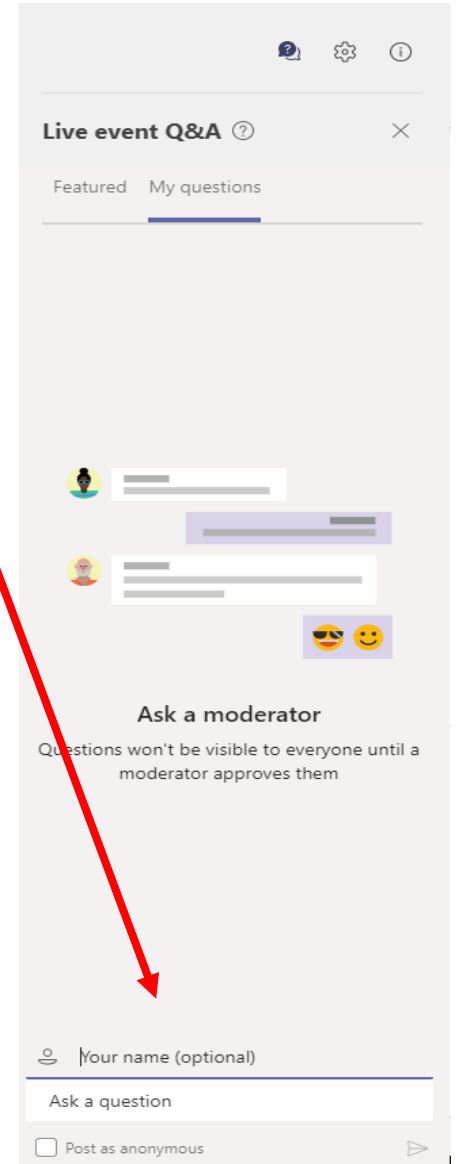
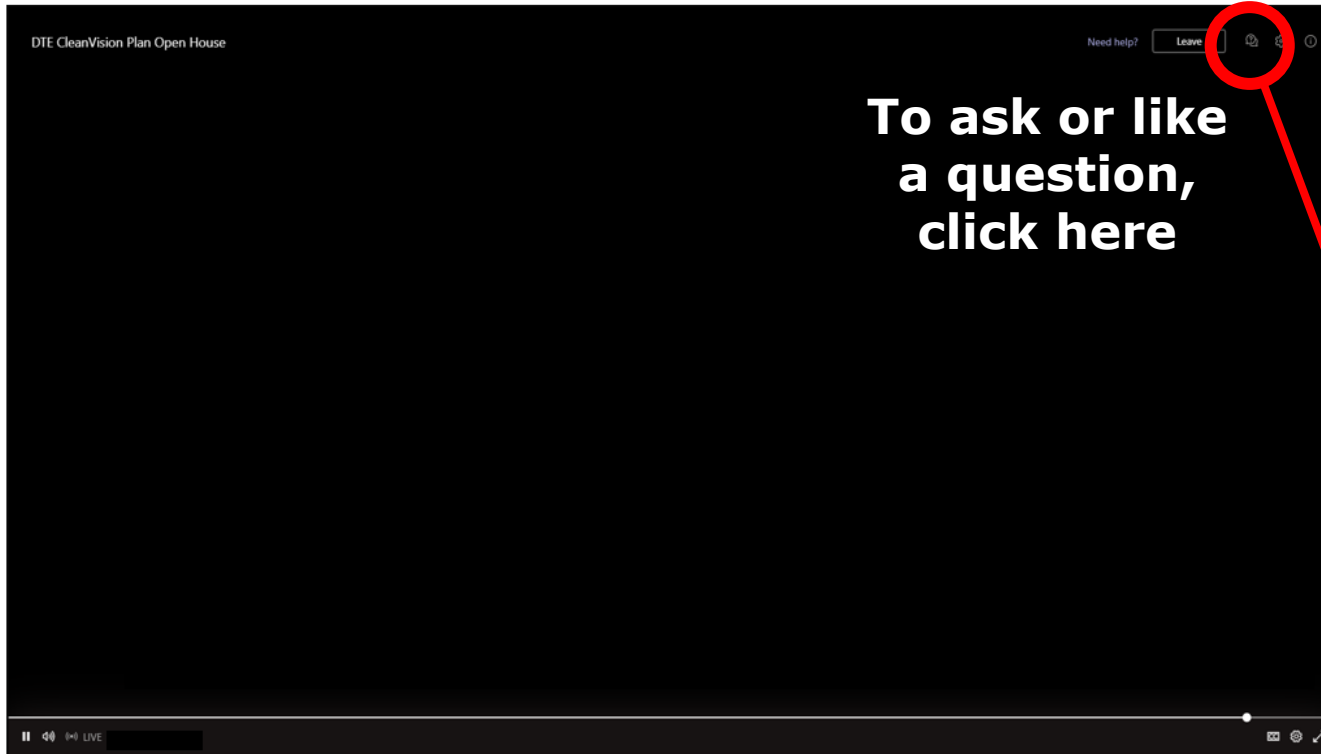
Recording and transcript



Helpful Tips: Closed Captioning



Helpful Tips: Submitting a Question



Agenda

Public Open House #4: April 19, 2022

Today's agenda

- Introduction
- Coal Plant Retirements and Transition (i.e., Retire with PRIDE)
- Grid Modernization and Reliability
- Q&A

Please check our website for updates:
dtecleanenergy.com



Joyce Leslie

**Director, Business
Planning &
Development**



Brian Kincaid

Plant Director



Sharon Pfeuffer

**Vice President, Distribution
Engineering & Construction**



Laura Mikulan

**Manager, Integrated
Resource Plan**



Pete Ternes

**Manager, Corporate
Communication**

What is an Integrated Resource Plan (IRP)?



- An IRP is a comprehensive plan to meet electricity needs of a power company's customers 5, 10, and 15 years into the future
- An IRP details the planned resources that a power company will use to deliver reliable, affordable electric supply to its customers
- Electric utility IRP filings are required by the State of Michigan

Strategic investment decisions are guided by DTE Electric Planning Objectives¹ that are common across the organization



SAFE:

Public and employees are kept free from injury; meet all State and Federal requirements



RELIABLE AND RESILIENT:

Minimal equipment outages and disruptions to customers



AFFORDABLE:

Cost-effective service provided to all customers



CUSTOMER ACCESSIBILITY AND COMMUNITY FOCUS:

Flexible energy options available to all customers; timely two-way communication with customers and stakeholders in all communities

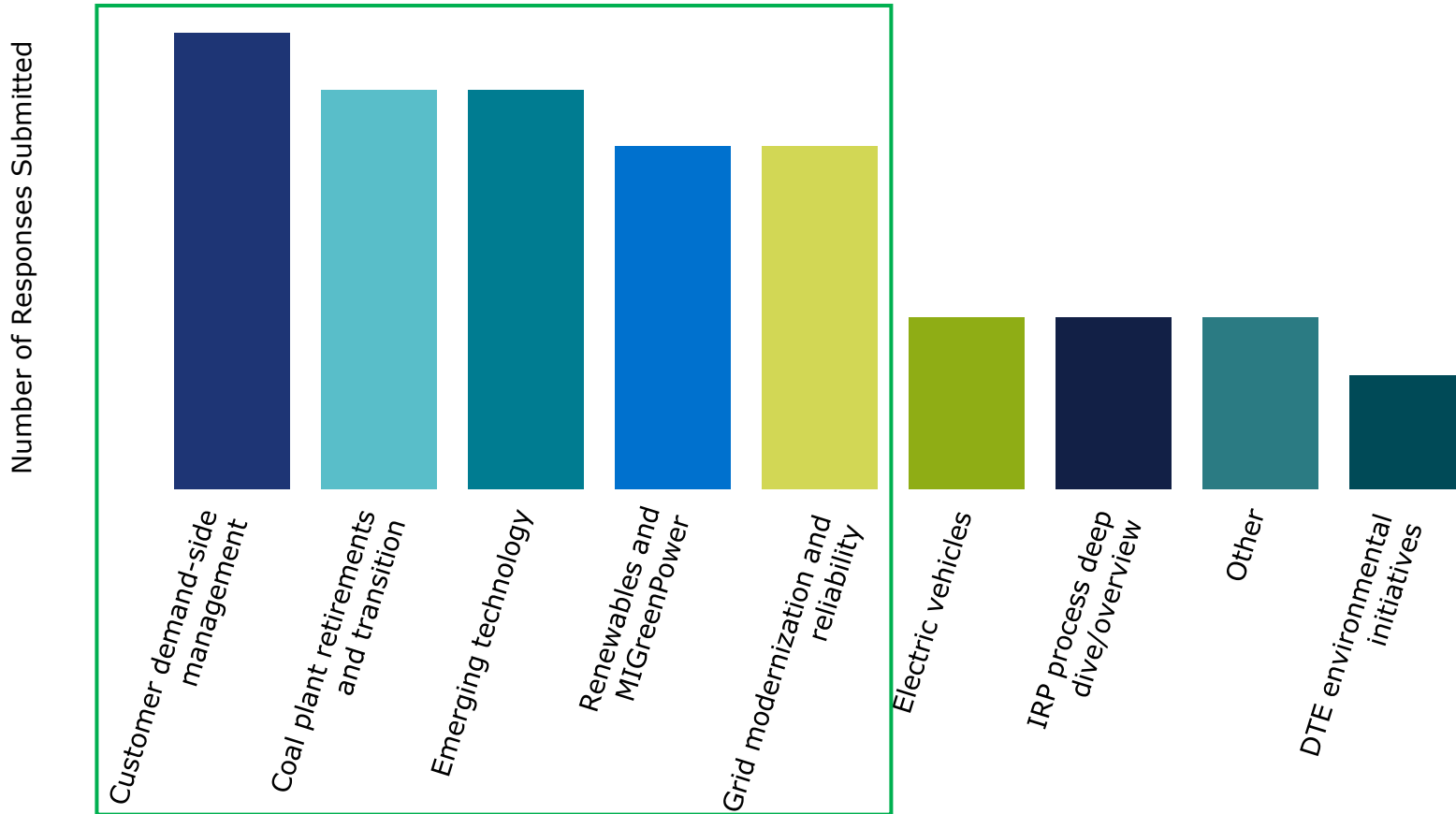


CLEAN:

Operate in an environmentally sustainable manner and achieve low carbon aspirations enabling a decarbonized economy in Michigan

Your survey feedback shaped the open house agendas

What are areas of interest relative to the CleanVision Plan that you would like to engage in at Public Open House meetings?



Today's discussion will focus on coal plant retirements and transition, and grid modernization and reliability

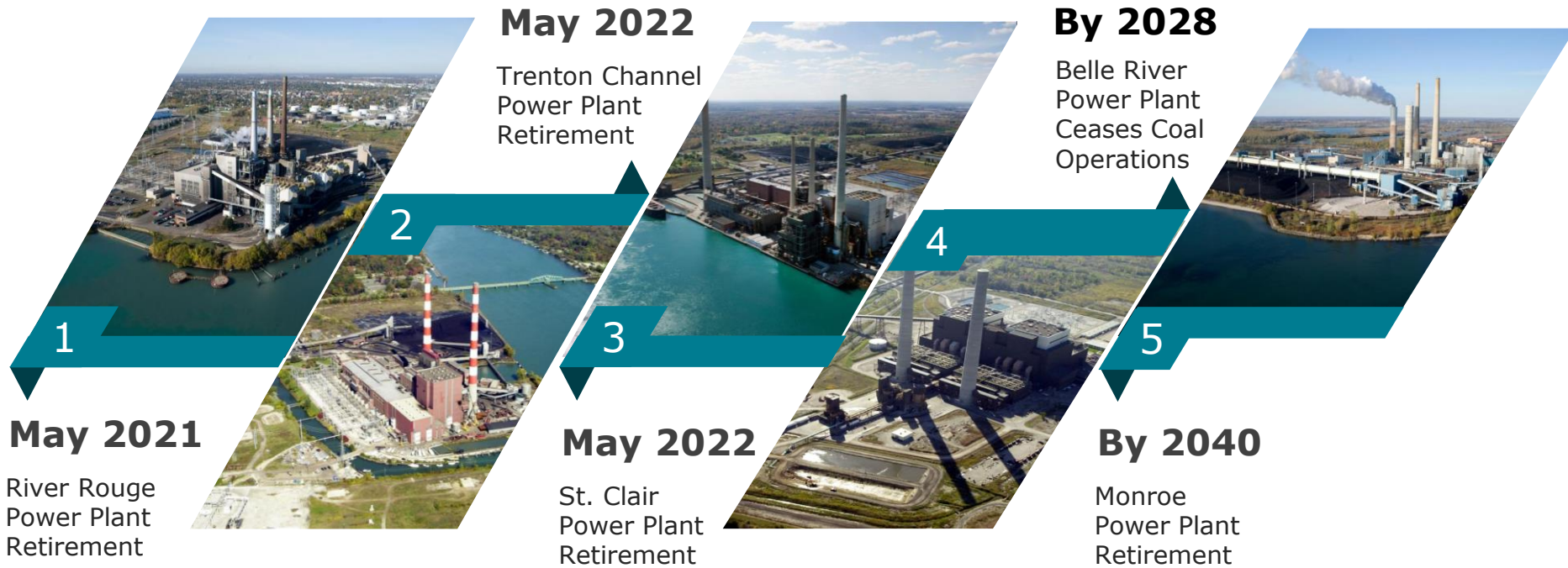
**Coal Plant Retirements and Transition – Retire with PRIDE
(People, Respect, Integrity, Dignity,
and Engagement)**



Grid Modernization and Reliability



The sequential retirement of our coal-fired power plants is a key part of our CleanVision Plan. Focusing on employees and communities impacted by these retirements is critical



DTE is dedicated to keeping employees engaged and informed throughout the plant retirement process as they transition to different roles within the Company

Key Areas of Focus



Workforce
Planning

Employee
Development

Onboarding

Communications

Change
Management



We also continue to work closely with the communities impacted by plant retirements

Economic Development Collaboration

Downriver Economic Development Collaboration Effort



Volunteerism Initiatives



Today's discussion will focus on coal plant retirements and transition, and grid modernization and reliability

**Coal Plant Retirements and Transition – Retire with PRIDE
(People, Respect, Integrity, Dignity,
and Engagement)**

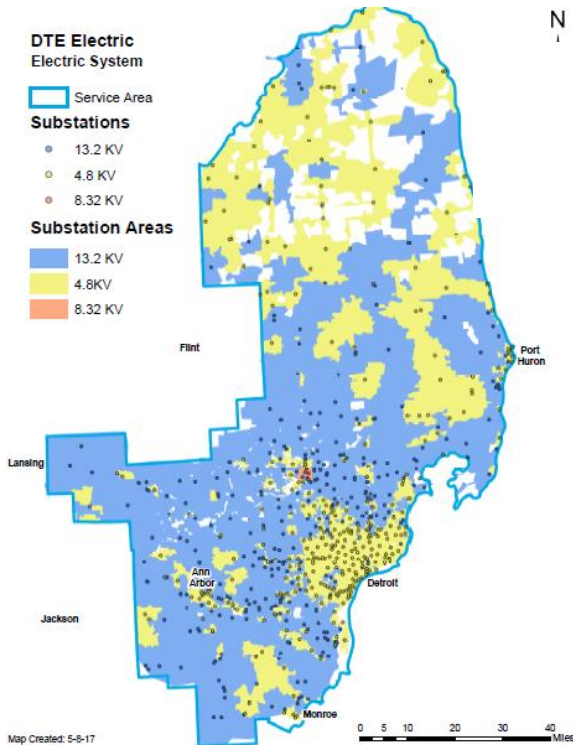


Grid Modernization and Reliability

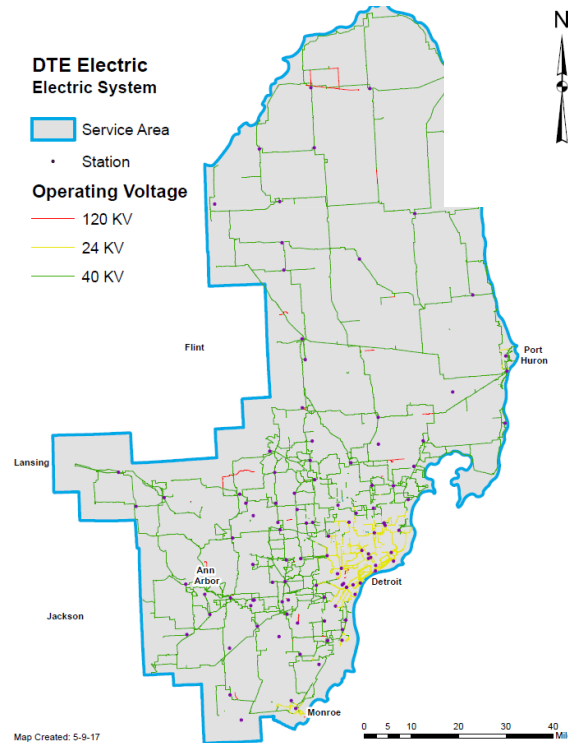


DTE's electric grid is vast and serves over 2.2 million electric customers

Distribution



Subtransmission



DTE Electric's Grid:

~2.2 million customers

>31,000 miles of overhead circuits

>16,000 miles of underground cable

> 1 million poles

~700 substations

DTE's commitment to a modern and more resilient grid is focused across four strategic pillars in our Distribution Grid Plan

Strategic Pillars

Tree Trimming



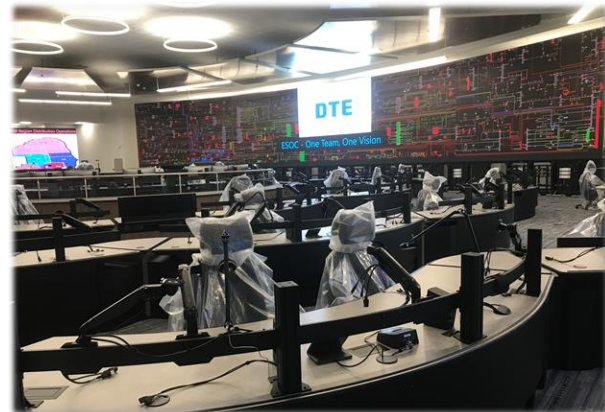
Infrastructure Redesign & Modernization



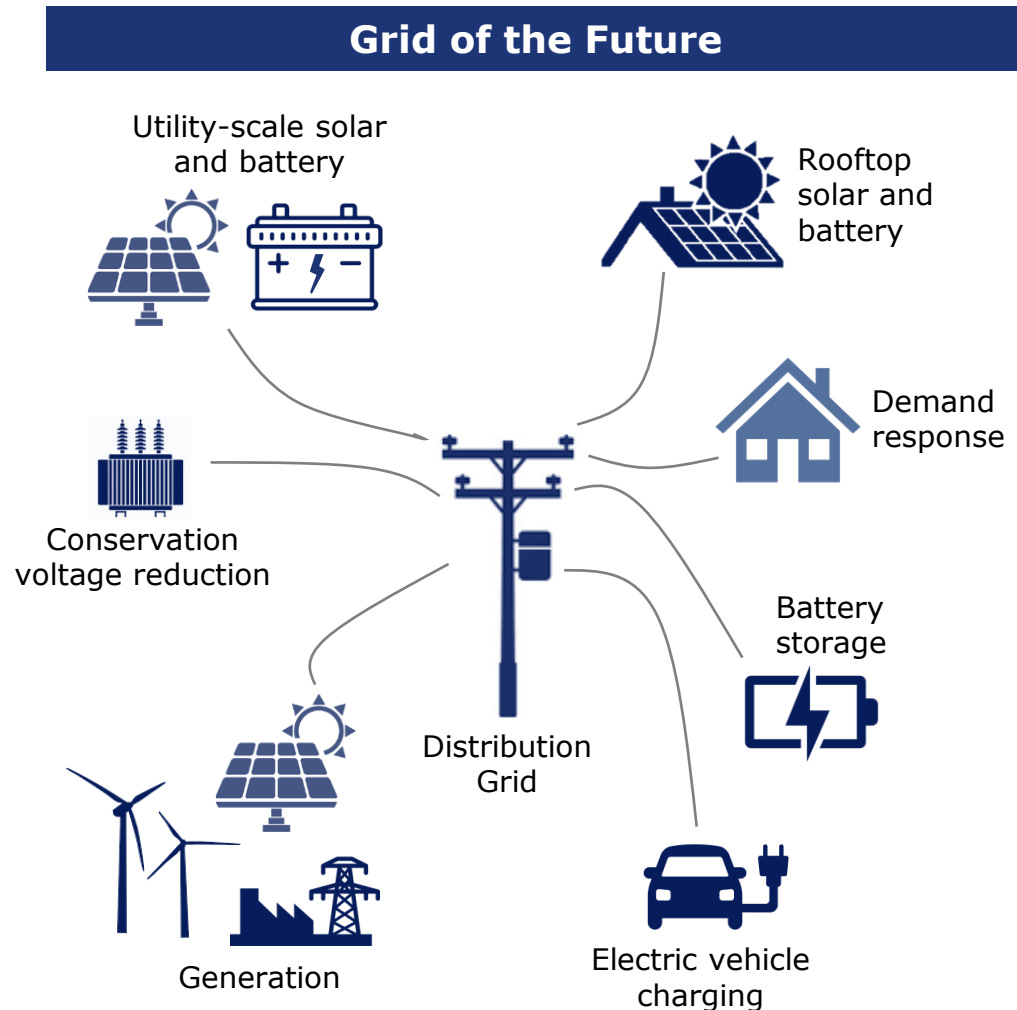
Infrastructure Resilience & Hardening



Technology & Automation



A reliable, flexible and modernized grid is needed to accommodate increasingly severe weather, meet changing customer expectations and integrate advanced technologies



Our 2021 Distribution Grid Plan will improve customers' current experience with the grid and provide value to customers in the future



Reduced outage duration and frequency¹



Reduction of annual outage costs



Additional capacity to accommodate increased load

We look forward to your continued engagement. Please visit our website for updates on the CleanVision Plan or contact us at any time for additional information

Public Open House Meetings

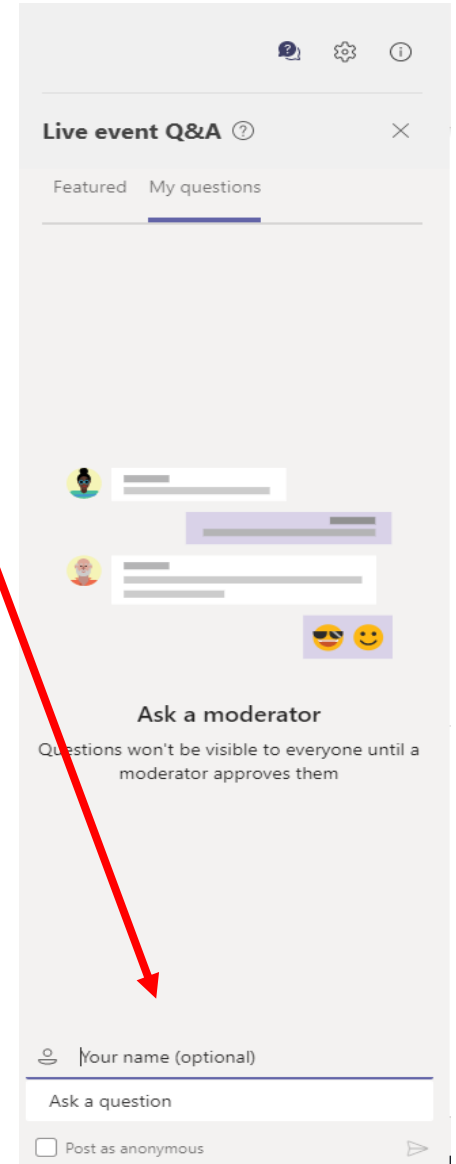
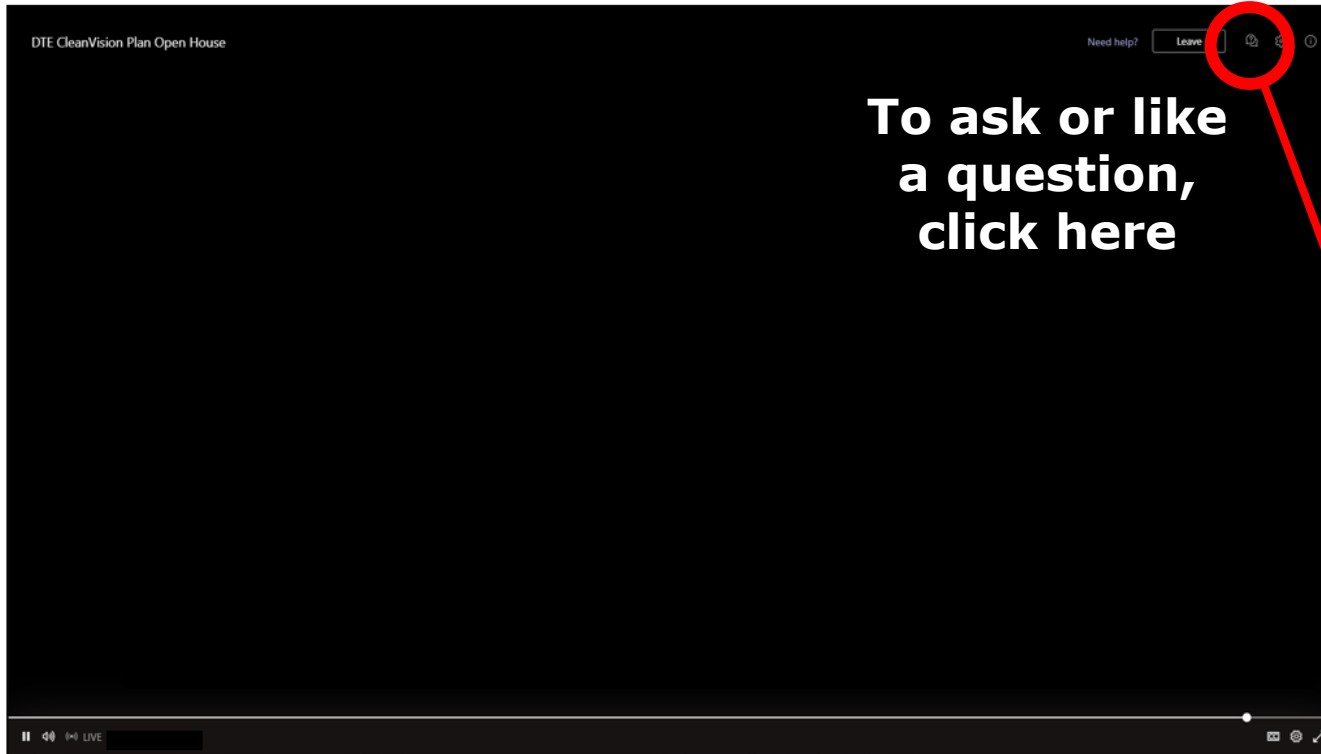
Date	Topic(s)	Additional Information
January 18	<ul style="list-style-type: none">• Introduction to CleanVision Plan• Overview of Integrated Resource Planning	<ul style="list-style-type: none">• Presentation, recordings and transcripts posted on website
February 22	<ul style="list-style-type: none">• Renewable Energy Overview• Introduction to Emerging Technologies	<ul style="list-style-type: none">• Presentation, recordings and transcripts posted on website
March 22	<ul style="list-style-type: none">• Energy Waste Reduction and Demand Response• MIGreenPower	<ul style="list-style-type: none">• Presentation, recordings and transcripts posted on website
April 19	<ul style="list-style-type: none">• Coal Plant Retirements and Transition (i.e., Retire with PRIDE)• Grid Modernization and Reliability	<ul style="list-style-type: none">• Presentation posted on website; recordings and transcripts from today coming soon

Visit our website: dtecleanenergy.com

Email us: DTE_Electric_CleanVision@dteenergy.com ([link](#))

Questions?

Helpful Tips: Submitting a Question



Thank You!

Thank you for joining us!

- You may find additional information, including a copy of this presentation, on our website dtecleanenergy.com
 - We will be posting recordings and transcripts of today's public meetings on our website in the coming days
- You may also find an FAQ on our website; we would like your feedback on any additional questions you may have
- Please submit your question(s) or comments on our website, linked above, or at DTE_Electric_CleanVision@dteenergy.com ([link](#)) at any time
- Please check on our website for updates regarding DTE's CleanVision Plan